



Hako-Fleet-Management – here is why:

- Cost transparency and control
- High machine availability
- Prevents machine damage
- Performance records
- Efficiency analysis
- Optimised fleet management



Keeping your fleet under control

Whether you operate cleaning machines, municipal vehicles or a combined fleet of machines: Hako-Fleet-Management visualises each machine's current operational capability in real time to ensure maximum availability.



Hako
Clean ahead



Superior cleaning, safe working
Our machines meet even the
highest demands in terms of
cleanliness and safety.

Hako: Environmentally friendly right from the start

It is our legacy to leave behind a clean planet. This is why resource-, environmental- and climate protection characterise each and every process at Hako, which has been certified by independent institutions.

We are there for you 24/7

Both Hako's on-call and spare part express delivery services guarantee highest levels of availability.

Everywhere and always in your vicinity

Our efficient sales & service network guarantees close proximity and rapid support.

Buying, leasing, renting

We offer you a wide range of attractive and individual financing and procurement alternatives.

BLUECOMPETENCE
Alliance Member

Partner of the Engineering Industry
Sustainability Initiative

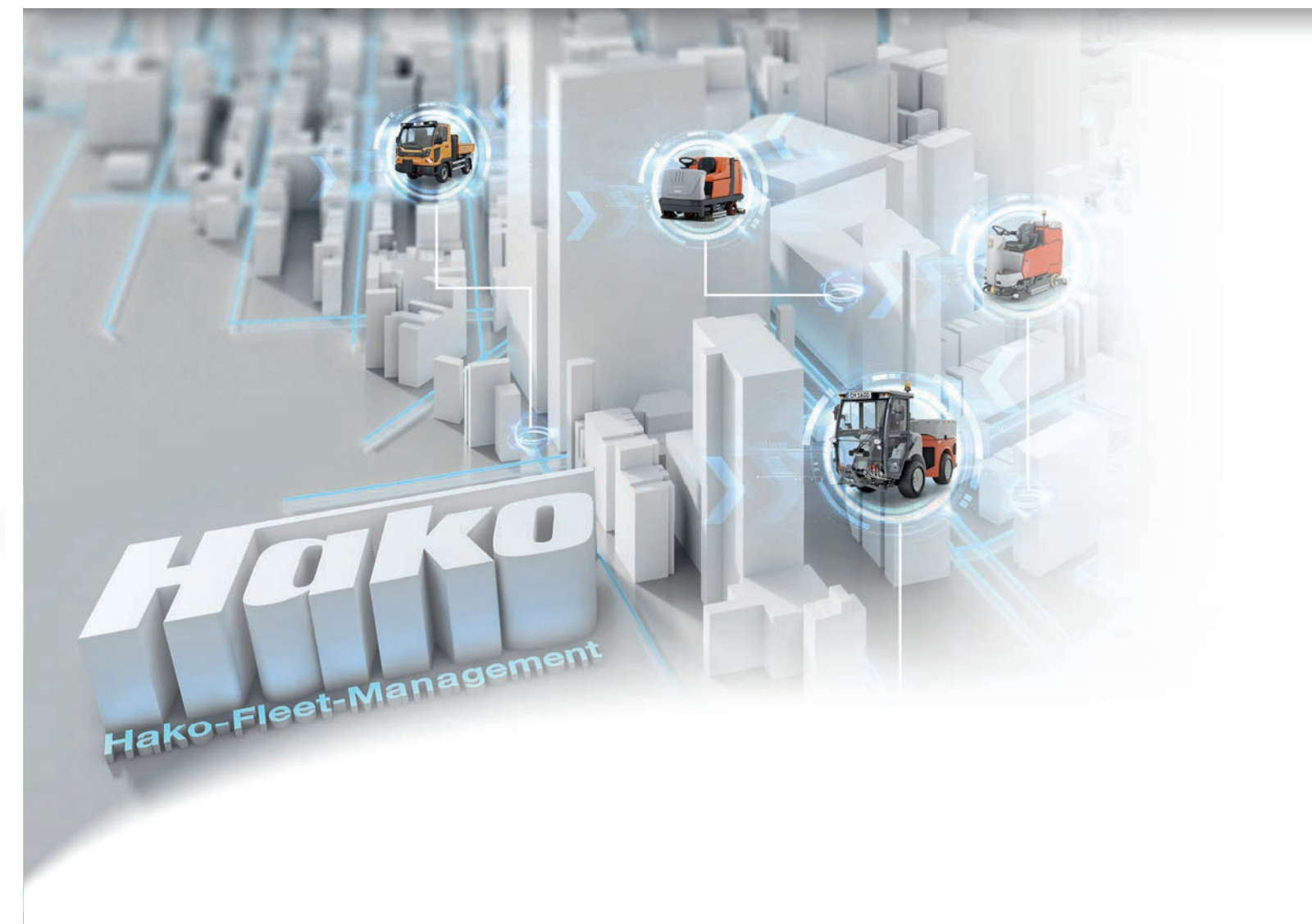
Blue Competence is an initiative of the VDMA (www.vdma.org). By using the trademark "Blue Competence", we commit ourselves to these twelve Sustainability Guidelines of the Mechanical Engineering Industry: www.bluecompetence.net/about

Hako GmbH
Head Office
Hamburger Str. 209-239
23843 Bad Oldesloe
Tel. +49 (0) 4531-806 0
info@hako.com
www.hako.com

81-10-2412/3

Cleaning Technology · Municipal Technology

Hako
Clean ahead



Hako-Fleet-Management *The Future of Fleet Management*

More transparency and economic efficiency

Hako-Fleet-Management: Optimise your resources

The larger the number of machines in your fleet, the more important is a good overview of all relevant machine data in order to guarantee economically efficient and transparent operation of your fleet. Hako-Fleet-Management records all relevant cost-, contract- and service-related data as well as the machine's current operating status and compiles all information in a clear, at-a-glance overview, which can be retrieved from the web portal via any browser-based system: on your PC, smartphone or tablet; in real time – 24/7.



view.X supports economically efficient utilisation and management of your fleet. All evaluations are available online 24/7, and are easy to retrieve thanks to the tool's intuitive user interface.

- **Cost/budget management** including comparison of budget figures with actual figures
- **Service and maintenance history management**
- **At-a-glance overview of your fleet of machines**
- **Visualisation of corporate and organisational structures**
- **Viewing and maintaining contract data**
- **Event-based “traffic light” system with e-mail/SMS notification**



Service-On-Demand
Service requests can be transmitted directly via the portal.



view.X.live contains all data and information recorded by view.X. In addition, all operation-relevant data of your fleet of machines is transmitted “live” and then visually processed in the web portal. This information can be used to create performance records for your clients. Combining the two information sources generates maximum added value and assistance in managing your machines and vehicles perfectly.

- Creating performance records
- Live transmission of operating times and current status of the machines
- Information about the current location and route tracking via GPS
- Recording of the exact hours of operation in real time
- Remote access to the machine
- Notification when service or maintenance intervals have been exceeded
- Live notification about machine availabilities through service and event codes
- Alarm function for periodic inspections/ maintenance tasks



Watch your machines live
View all relevant operating information and track your machines' current locations online.



entry.X, our optional electronic machine access authorisation, completes the system and enables the machine operator to set up access accounts for authorised users. Working with the machine requires prior user identification.

view.X.live

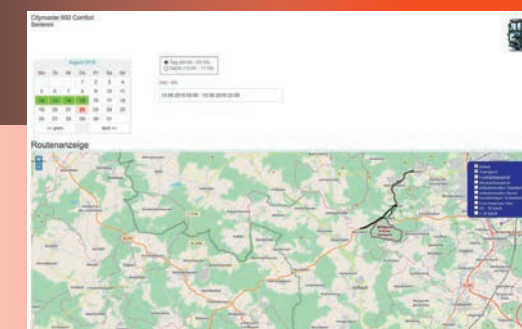
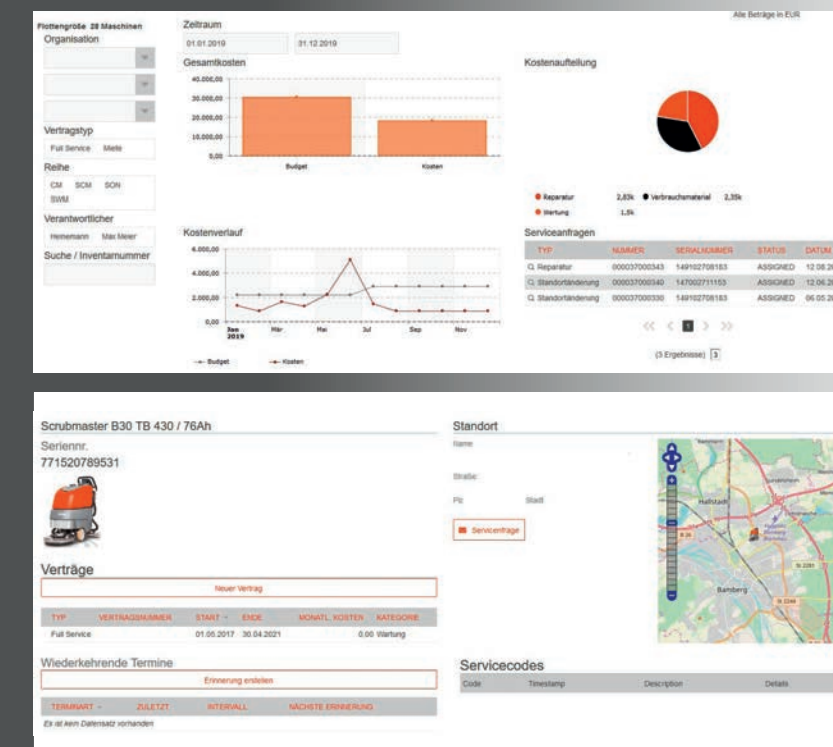


data.X is an interface for authorised third-party suppliers of telemetric systems allowing local access to raw operating data directly from the machine.

view.X

Clear visualisation of cost patterns and service requests.

Access to all contracts and recurring appointments as well as to the machine's service codes.



Live route tracking including status information on the cleaning tools at any given time.

Exact display of which tools and functions have been used and when – available as a complete or individual overview.